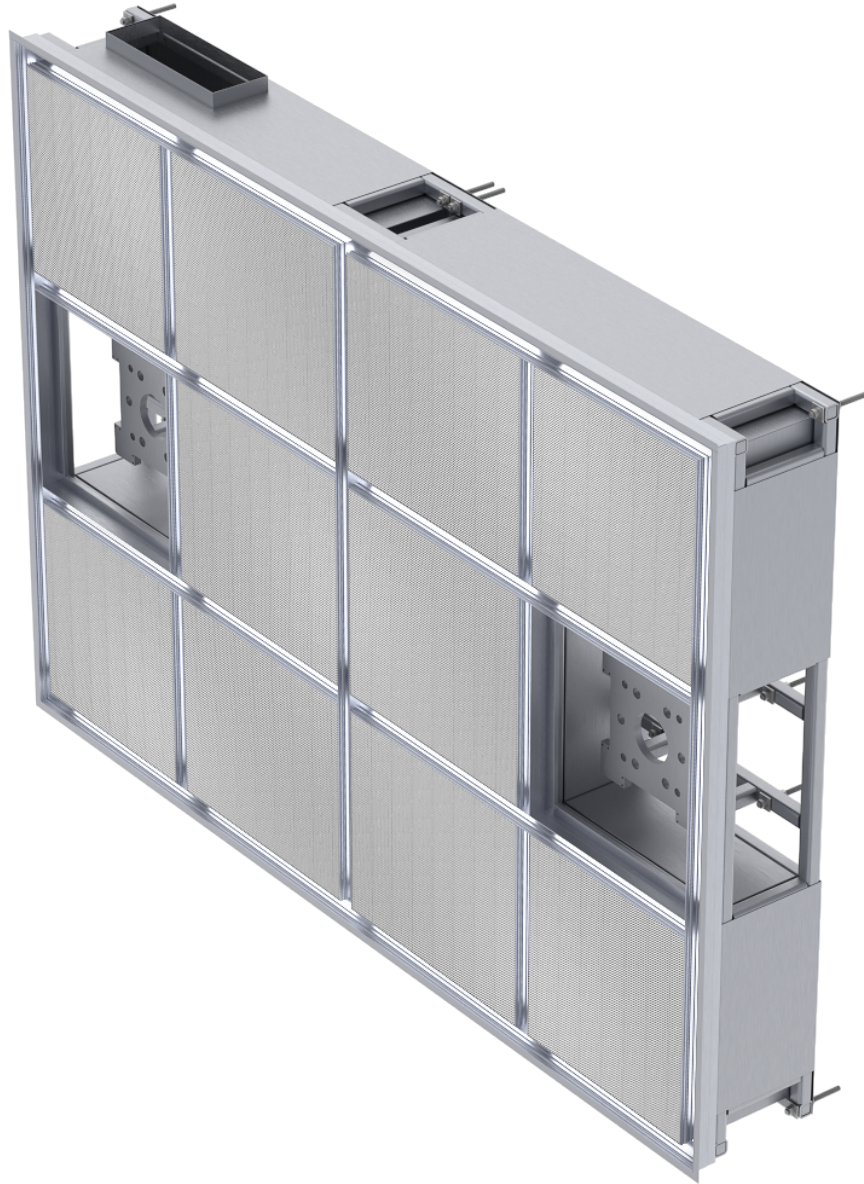
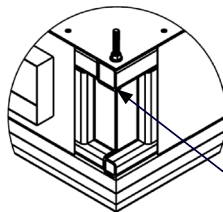
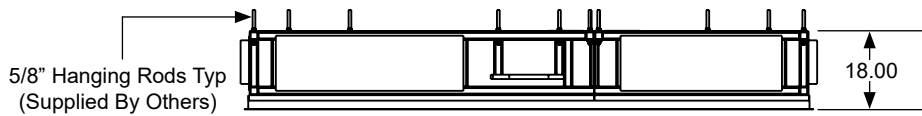
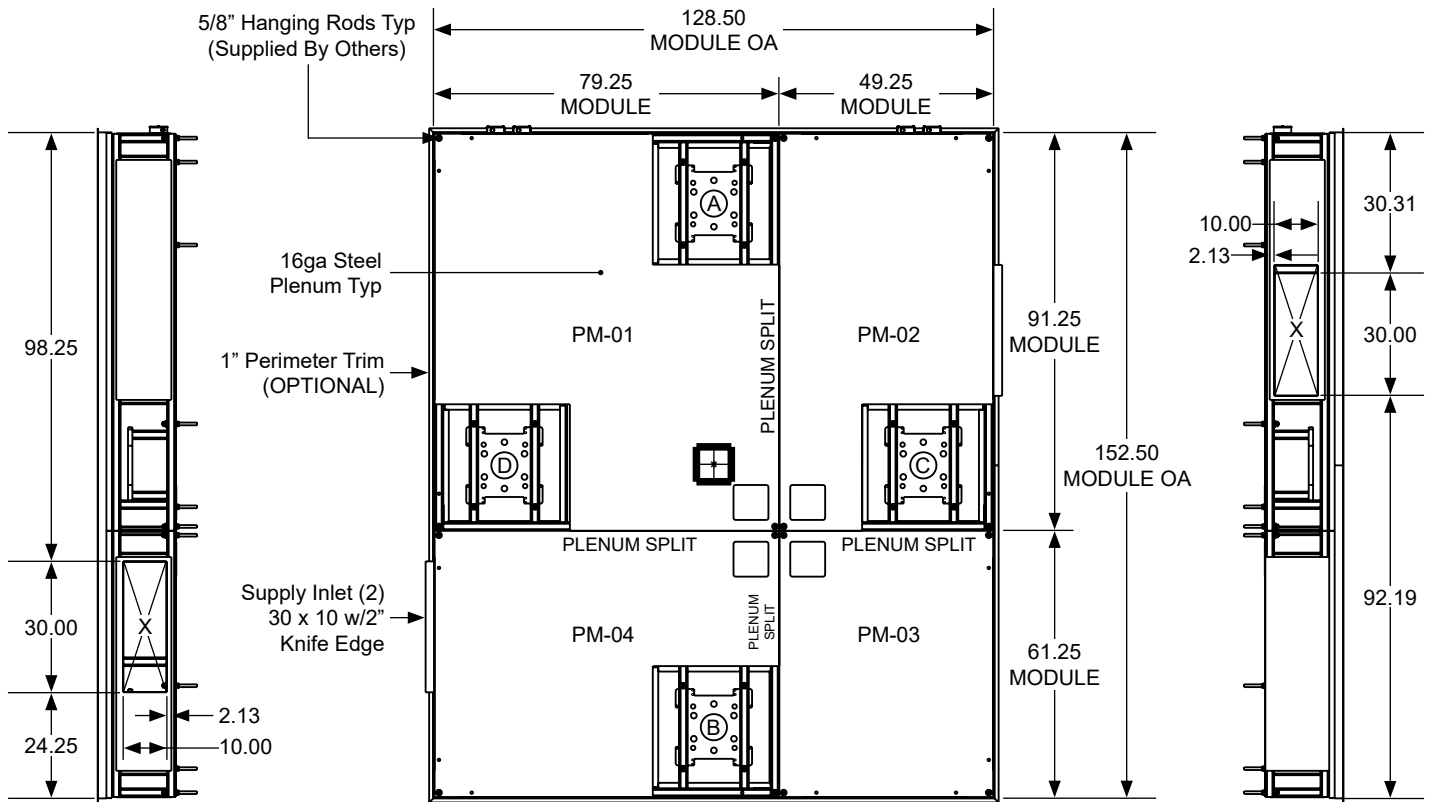
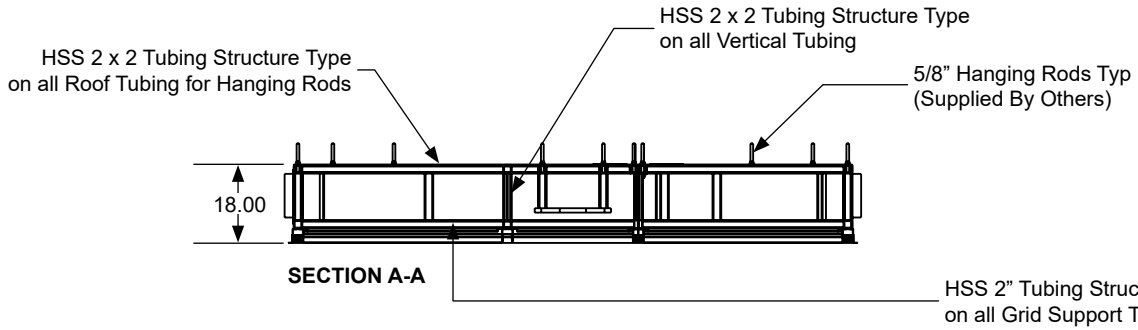


**NEXUS OR SUITE - S**

Structural Operating Room Equipment System W/LED Lighting



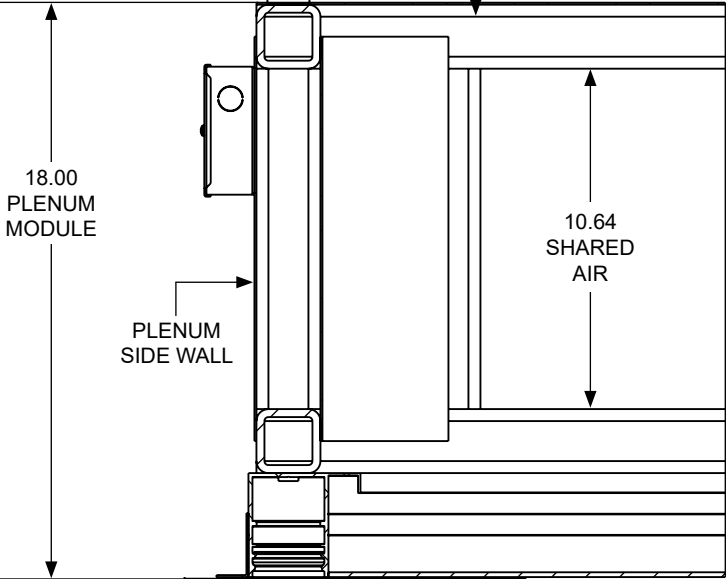


Open Access at All Outer Corners and Outer Section Splits to Hanging Rods for Ease of Installing

**HANGING ROD ACCESS DETAIL**  
(ALL OUTSIDE CORNERS AND OUTSIDE PLENUM SPLITS)

PLENUM SUSPENSION HARDWARE AT CORNER,  
MID SPANS AND BOOM LOCATIONS;  
AS REQUIRED BY STRUCTURAL ENGINEER  
(THREADED RODS OR ANCHORS ARE BY OTHERS)

HSS TUBE STEEL FRAMING ON  
ALL SIDES OF PLENUM INTERIOR



18.00  
PLENUM  
MODULE

10.64  
SHARED  
AIR

PLENUM  
SIDE WALL

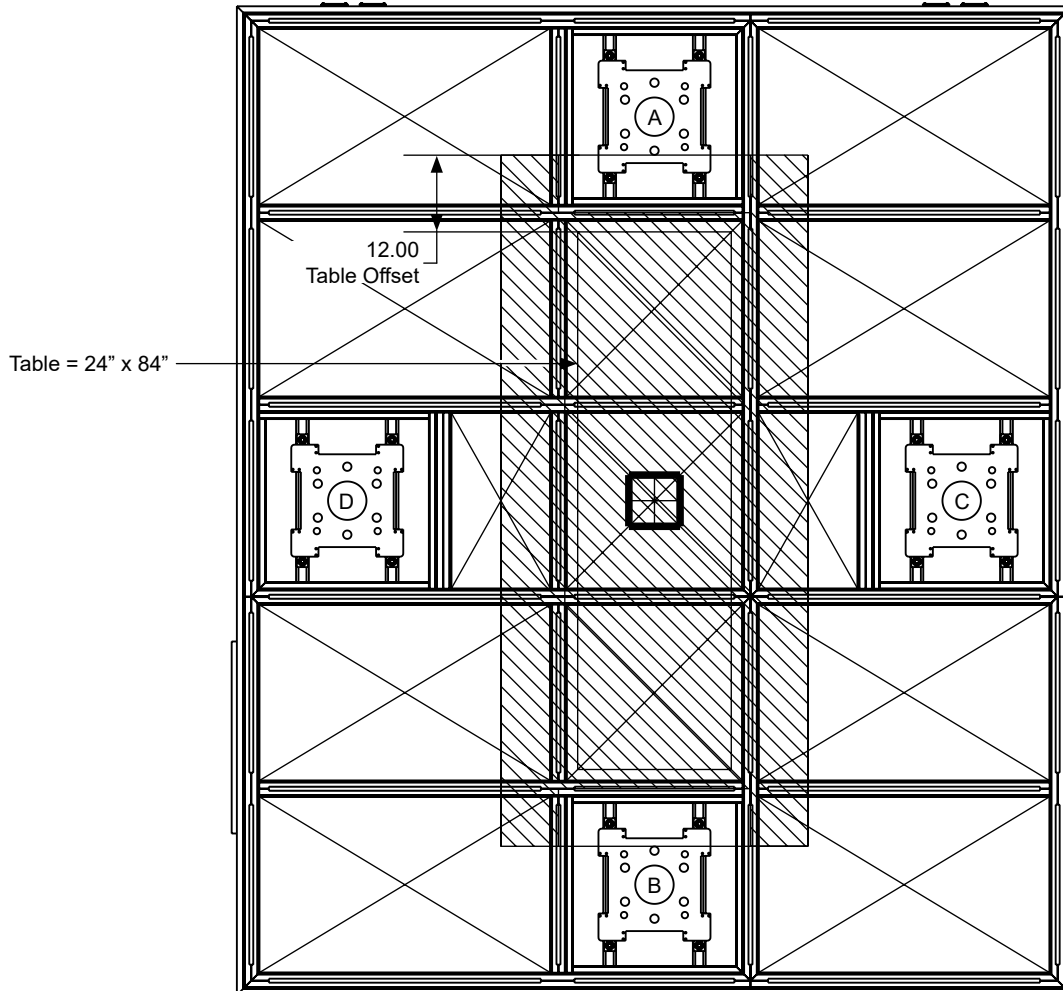
1" PERIMETER TRIM  
(OPTIONAL)

GRID CHANNEL  
W/LED LIGHTING

**ASHRAE 170-2021 CRITERIA**



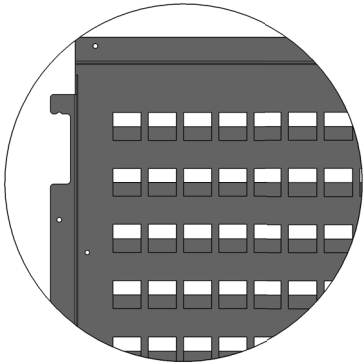
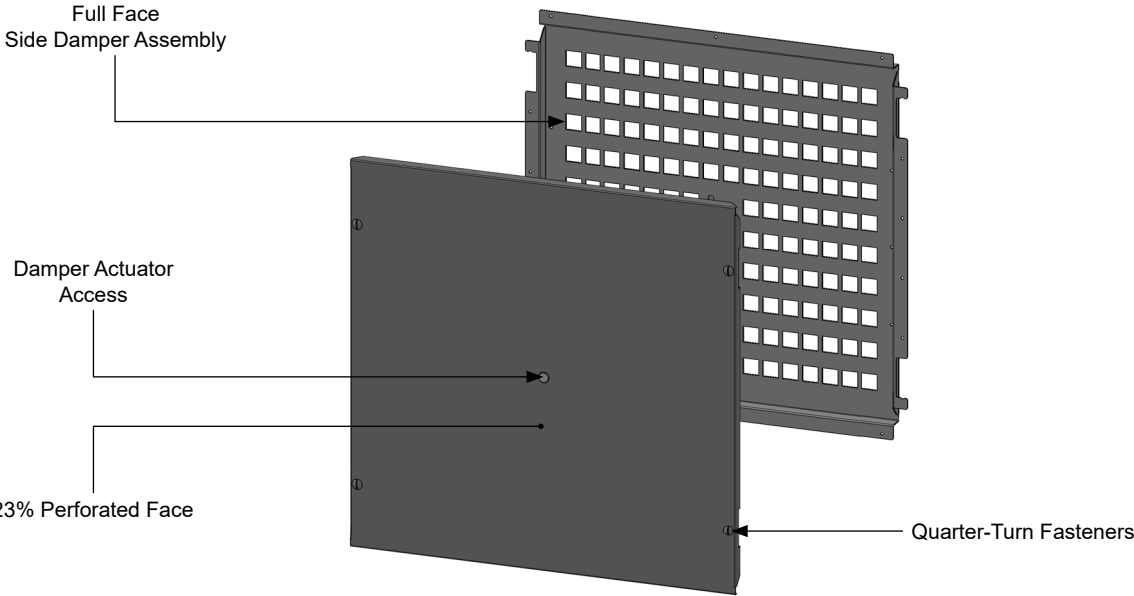
Coverage area of the primary supply diffuser array shall extend a minimum of 12" beyond the foot print of the surgical table on each side.  
 >70% of this area shall be within the primary diffuser supply area.



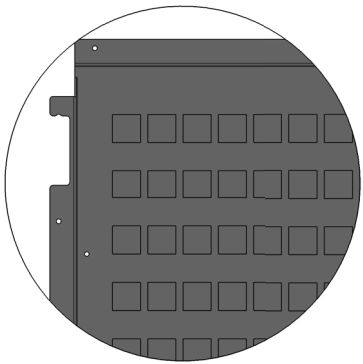
SYSTEM DESIGN SPEC	
ROOM SQ. FT	768
CEILING HT.	10'-0"
ACH	25
VELOCITY FPM	30.12
DIFFUSER FA SQ. FT	106.25
CFM	3200

ROOM SYSTEM RANGE		
CFM: 2656.25	CFM: 3187.5	CFM: 3718.75
VELOCITY: 25 FPM	VELOCITY: 30 FPM	VELOCITY: 35 FPM
DIFFUSER FA: 106.25 SF	DIFFUSER FA: 106.25 SF	DIFFUSER FA: 106.25 SF
ACH: 20.75	ACH: 24.90	ACH: 29.05

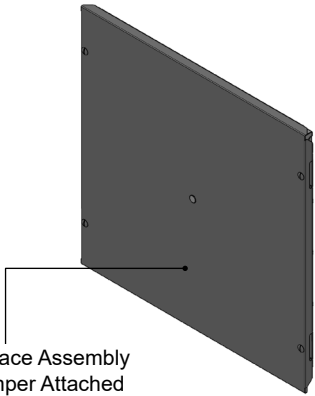
Table w/Offset = 36 SQ FT (100%)  
 Diffuser Area of Table = 32.25 SQ FT (89.6%)



50% Open Damper

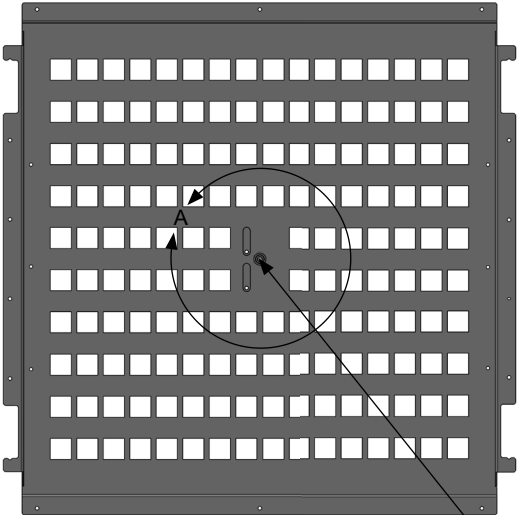


Fully Closed Damper



Perforated Face Assembly w/Side Damper Attached

Width & Height Varies by Job Size Requirements

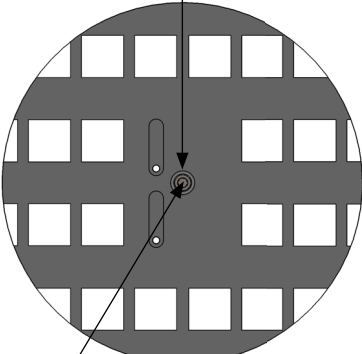


Fully Open Damper (2 Plate Damper)

Damper Actuator

Damper Plate Travel

3/16" Hex Key Operator (Hex Key Not Provided)

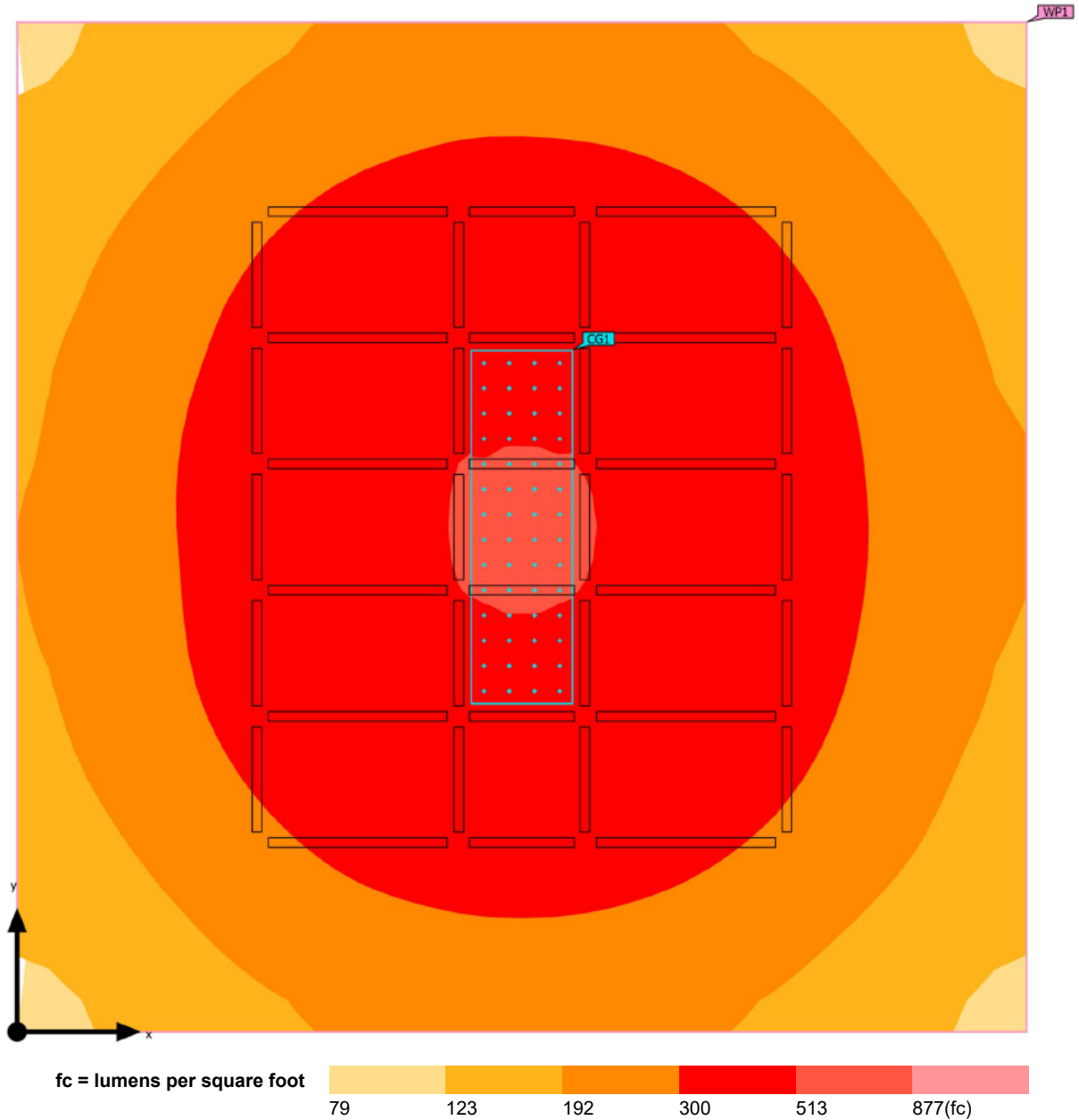


DETAIL A SCALE 1 : 4

Material and Finish Determined by Job Requirements

Building 1. Storey 1. Room 1 (Light scene 4 (Room 1))

### Calculation Objects



#### Working Planes

Properties	$\bar{E}$ (Target)	$E_{min}$	$E_{max}$	$U_o (g_1)$ (Target)	$g_2$	Index
Working plane (Room 1)	296 fc	111 fc	524 fc	0.38	0.21	WP1
Perpendicular illuminance (adaptive)	( $\geq 92.9$ fc)			( $\geq 0.60$ )		
Height: 3.000 ft, Wall zone: 0.000 ft	✓			✗		

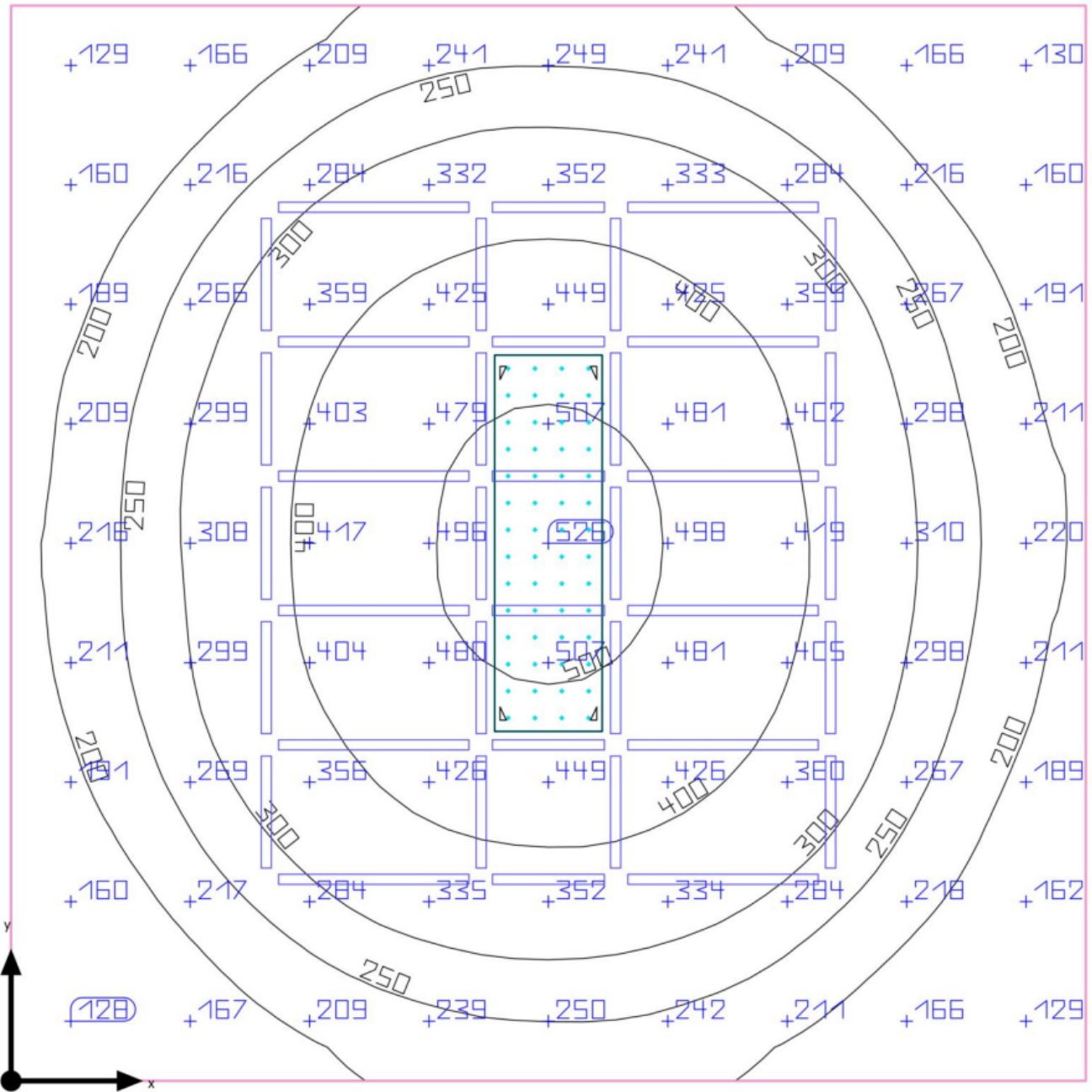
#### Calculation Surfaces

Properties	$\bar{E}$	$E_{min}$	$E_{max}$	$U_o (g_1)$	$g_2$	Index
OR Table Perpendicular illuminance Height: 3.000 ft	507 fc	481 fc	523 fc	0.95	0.92	CG1

Utilisation profile: Health care premises - Operating areas (5.46.2 Operating theatres)

Building 1. Storey 1. Room 1 (Light scene 4 (Room 1))

### Summary



<b>Ground area</b>	400.01 sq ft
<b>Reflection factors</b>	Ceiling: 70.0 %, Walls: 50.0 %, Floor: 44.2 %
<b>Maintenance factor</b>	0.80 (fixed)

<b>Clearance height</b>	10.000 ft
<b>Mounting height</b>	10.000 ft
<b>Height Working plane</b>	3.000 ft
<b>Wall zone Working plane</b>	0.000 ft

This Submittal is meant to demonstrate general dimensions and information of this product. The drawings are not meant to detail every aspect of the product. Drawings are not to scale. Titus reserves the right to make changes without written notice.

All rights reserved. No part of this work may be reproduced or transmitted in any form or by any means, electronic or mechanical, including photocopying and recording, or by any information storage retrieval system without permission in writing from Air Distribution Technologies.